

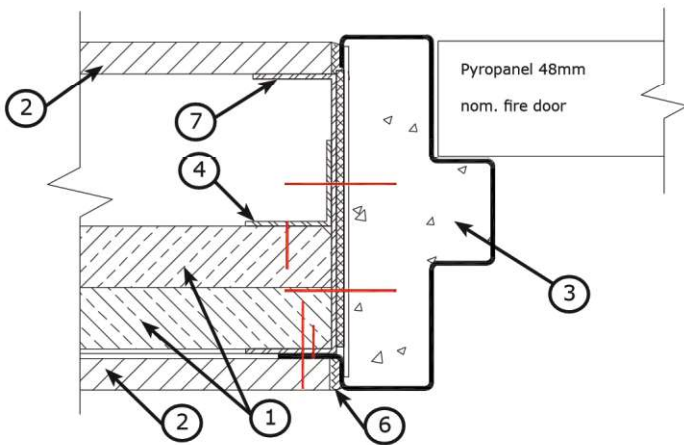
Knauf IntRwall Shaftliner Walls

DESCRIPTION

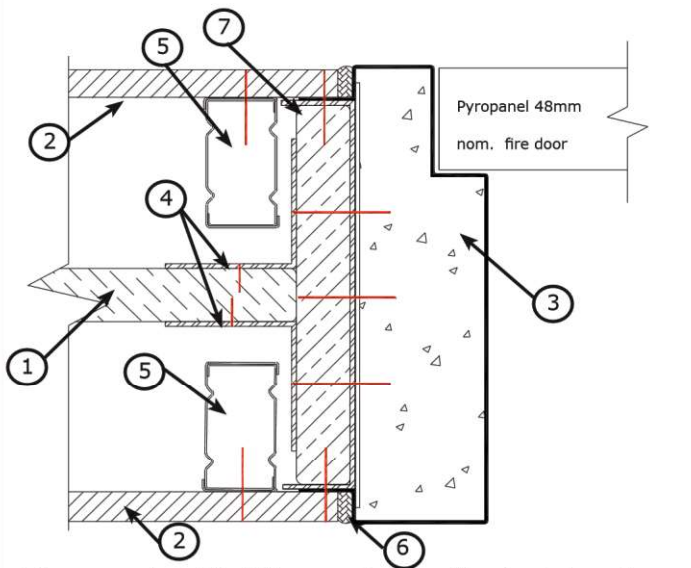
Building-in details showing the approved fixing methods for Knauf IntRwall shaftliner wall systems for up to 2 hours of fire rating complying to current AS1530.4 standard.

REQUIREMENTS

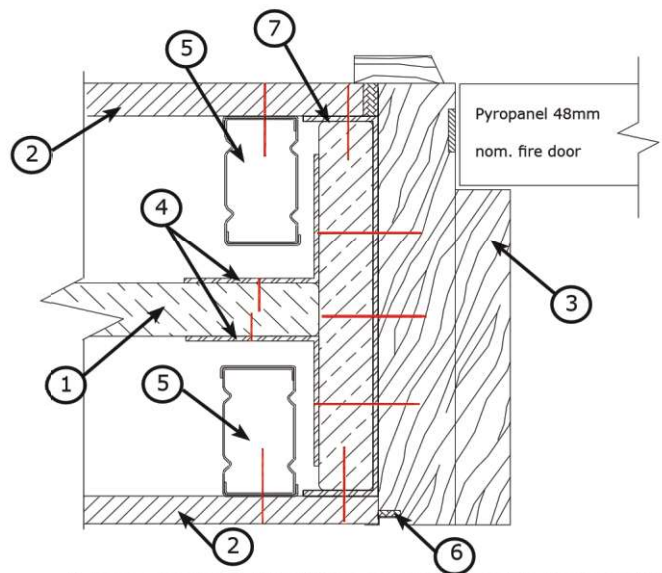
- Back-filling with Pyropanel light weight M4 Mortar.
- Pyropanel 48mm nom. thick fire door.
- Fixings to be at max. 450mm centres.
- Ensure all gaps are tightly filled with Pyropanel fire rated sealant.



Offset 2 layer Shaftliner systems with steel door frame



1 layer central Shaftliner systems with steel door frame



1 layer central Shaftliner systems with timber door frame
(Timber frame limited to 1hr applications)

Note: Legend for drawings on Page 2

ASSA ABLOY AUSTRALIA Pty Ltd

235 Huntingdale Rd, Oakleigh, Vic 3166

Ph: (03) 9837 8500

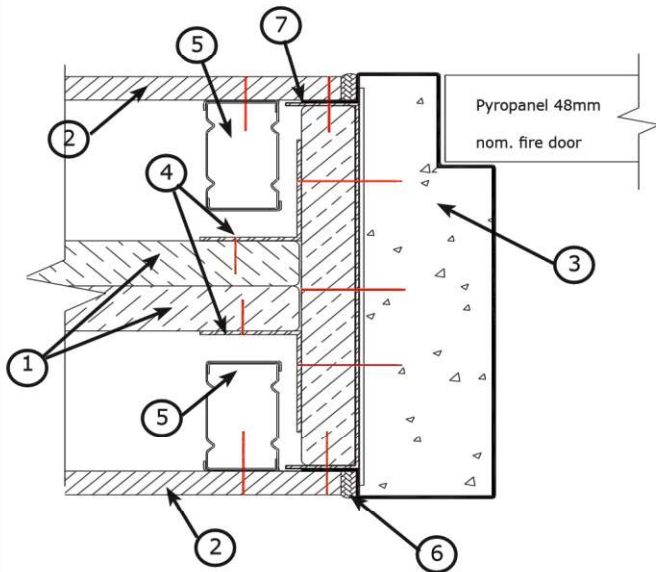
Email: sales@pyropanel.com.au

Web: www.pyropanel.com.au

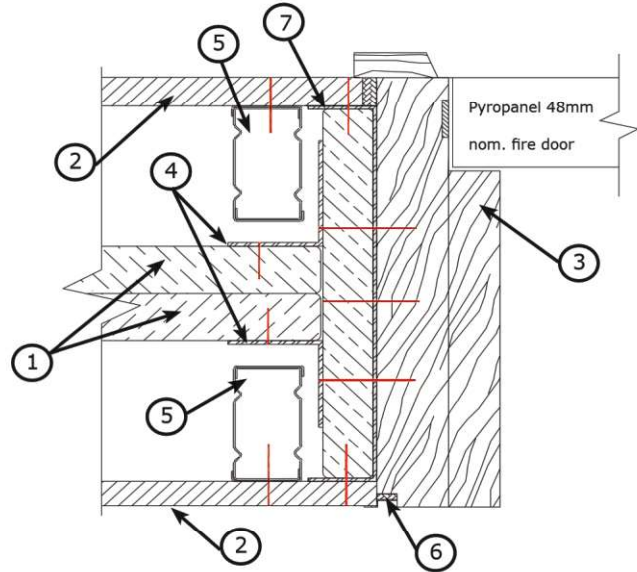
Distributed by:



Knauf IntRwall Shaftliner Walls



2 layer central Shaftliner systems with steel door frame


 2 layer central Shaftliner systems with timber door frame
(Timber frame limited to 1hr applications)

LEGEND FOR DRAWINGS

Item	Description
1	Knauf 25mm Shaftliner
2	Plasterboard as required by IntRwall system number (Wall system numbers listed below)
3	Steel frame or timber frame: » 1.6mm Steel frame filled with Pyropanel light-weight M4 mortar, or » Pyropanel fire rated timber frame (timber frame limited to 1 hr applications) » Frame fixings at 450mm centres
4	35 x 35 x 0.7mm steel angle
5	Steel framing or timber stud framing
6	Pyropanel fire rated sealant
7	Steel framing track to suit thickness of wall with nominally 32mm wide flange and 1.2mm thick

Knauf systems with 2 x 25mm Shaftliner

System No.	FRL
IW60.1	-/60/60 -/90/90*
IW90.3	-/90/90 -/120/120*
IW90.4	-/90/90
IW120.1	-/120/120

Knauf systems with 1 x 25mm Shaftliner

System No.	FRL
IW60.3	-/60/60
IW60.4	-/60/60
IW60.5	-/60/60

Test reference no: FTC 745