

Pyropanel Double-Acting Fire Doorsets

DESCRIPTION

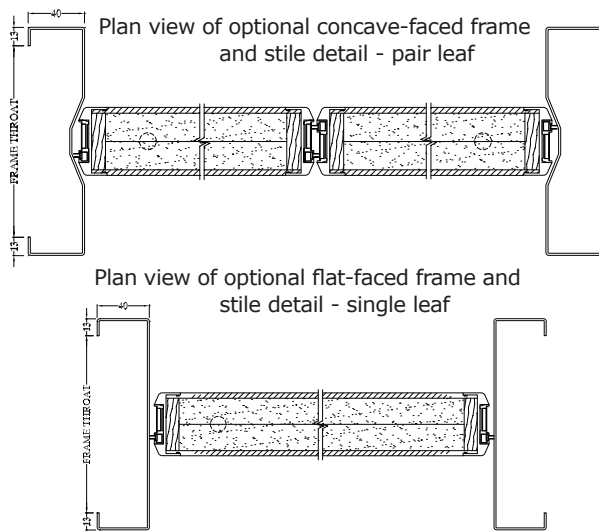
Timber Fire door leaves utilising the latest Pyropanel fire resistant door core and design technology. These doorsets are approved to AS1530.4:2014, and have the benefit of a double-action swinging mechanism.

APPLICATIONS

Ideal for heavy traffic areas where two-way swing is an important function, and where fire resistance of up to 2 hours is required. Typical installations include hospitals, public buildings, corridors, nursing homes, schools, etc.

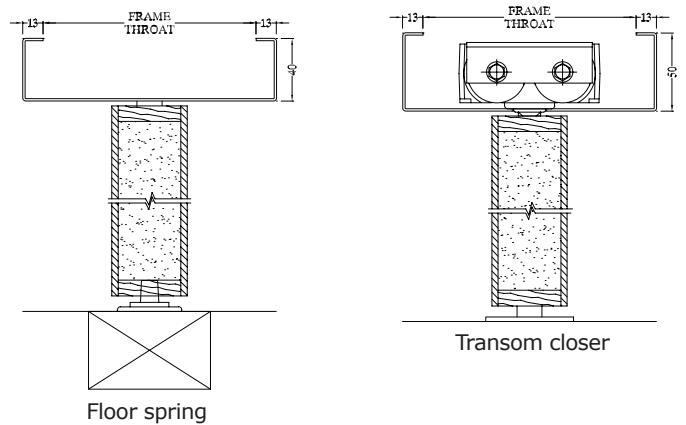
FEATURES

- For use in 1hr and 2hr plasterboard stud walls, fire rated masonry walls, and Concrete walls. Refer to your Pyropanel distributors if your wall type is not listed.
- Available in singles or pairs.
- Special vertical edges incorporating extruded aluminium section with integrated intumescent smoke seals.
- Suitable for Pyropanel packed steel door frames designed specifically for double acting doors, available in flat faced or concave (please specify desired finish).
- Facings - Plywood, MDF or Hardboard.
- Can be fitted with approved floor springs or transom (overhead) closers.



OPTIONAL EXTRAS

- Veneer or laminate facings.
- Vision panels up to 300 x 200 or 600 x 100mm nom.
- Stainless Steel kick-plates to selected height.



MODELS AVAILABLE

Model	FRL	Thickness	Max Leaf size - Single	Max Leaf size - Pair
PDAFD060-48	-/60/60#	48	2650 x 1075 or 2400 x 1200	2650 x 1075/1075 or 2400 x 1200/1200
PDAFD120-48	-/120/60#	48	2650 x 1075 or 2400 x 1200	2650 x 1075/1075 or 2400 x 1200/1200

Maximum Insulation rating shown (60 minutes) with frame packed with approved mortar (i.e. Pyropanel M4 lightweight mortar). 30 minute Insulation rating for other approved packing.

HOW TO SPECIFY

Eg, "Door to be a Pyropanel PDAFD060*-48 Double-Acting Fire Rated Doorset, 48mm nom. thick, -/60/30* FRL, Ply faced*, mounted in back-filled Pyropanel steel door frame with flat* / concave* finish, with the following options: (e.g. vision panels, kick panels, etc*).

* denotes example - delete, change or specify as required