

# FIRE DOORSETS AND PANEL OVER (WITH TRANSOM)

## DESCRIPTION

Timber fire door leaves and panel over including separating transom, utilising the latest Pyropanel fire resistant door core and design technology. These doorsets are approved to AS1530.4:2014, and are available in a variety of sizes and finishes in 1 hour and 2 hour fire resistance levels.

## APPLICATIONS

Ideal for applications that require a certified fire door and a panel over with a separating transom. Typically found in office lobbies, hospitals, schools, public buildings, shopping centres, factories, warehouses, plant rooms, etc.

## FEATURES

- Panel available over single and pair fire door leaf configurations (note: panel over pair doors is a single panel only)
- Door and panel are 48mm nom. thick.
- Pressed metal door frames only.
- Facings - Ply, MDF or Hardboard (tempered and non-tempered).
- Panel is screw-fixed, with optional collet and cap.

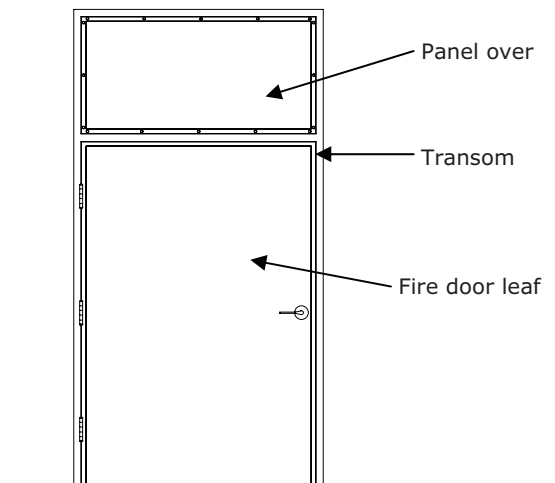
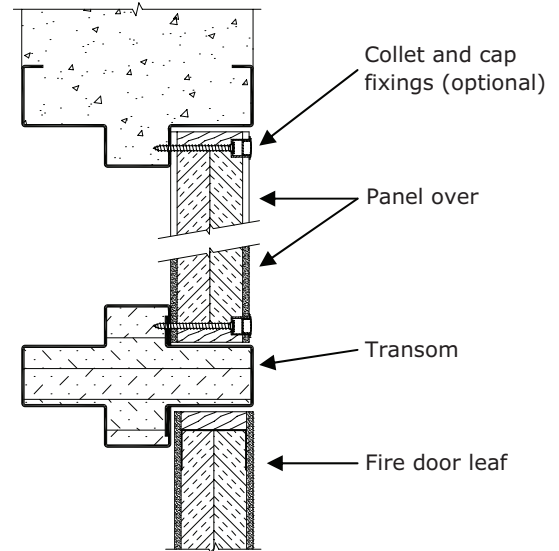
## OPTIONAL EXTRAS

- Vision panels up to 300mm x 200mm or 600mm x 100mm.
- Kick panels of stainless steel to selected height.

## MODELS AVAILABLE

Model	Description	Max FRL	Max Leaf Size (H x W)	Max Panel size (H x W)
FDPO-WT-60-30	Single	-/60/30	3000 x 1500	1120 x 1500
	Pair	-/60/30	3000 x 1500 / 1500	1120 x 3010
FDPO-WT-120-30	Single	-/120/30	2700 x 1500	1120 x 1500
	Pair	-/120/30	2700 x 1350 / 1350	1120 x 2710

Refer to your preferred Pyropanel licensed distributor to confirm:  
 1. Chosen door hardware is approved.  
 2. Optional extras are suitable for chosen door type.



## HOW TO SPECIFY

"Door to be a Pyropanel FDPO-WT-60-30\* Fire Rated Door with Panel Over (with transom), 48mm nom. thick, -/60/30\* FRL, Ply faced\*, mounted in Pyropanel filled steel door frame, and the following options: (eg, vision panels, kick-plates, etc\*).

\* denotes example - delete, change or specify as required