

# FIRE DOOR LEAVES

## Fire door with panel over (no transom)

### DESCRIPTION

Timber fire door leaves and panel over with no separating transom utilising the latest Pyropanel fire resistant door core and design technology. These doorsets are fully tested and certified to AS1530.4, and are available in a variety of sizes and finishes in 1 hour fire resistance levels.

### APPLICATIONS

Ideal for applications that require a certified fire door and a panel over without a separating transom. Typically found in office lobbies, hospitals, schools, public buildings, shopping centres, factories, warehouses, plant rooms, etc.

### FEATURES

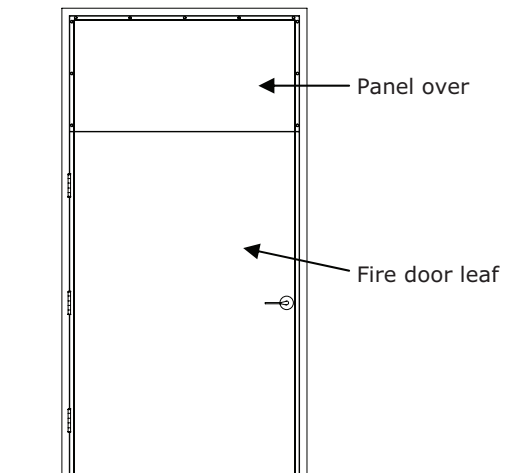
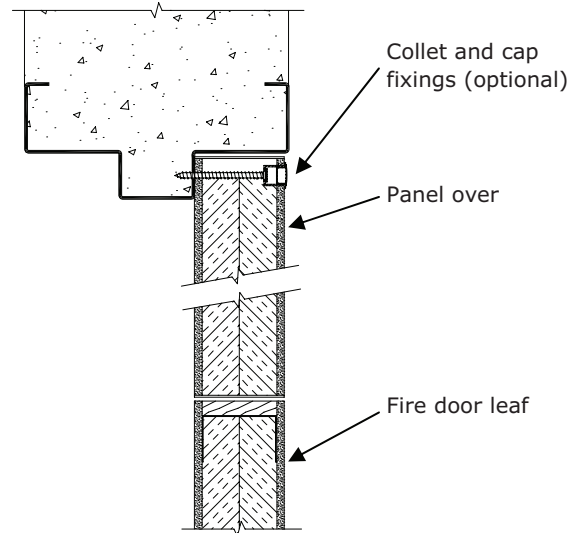
- Approved in plasterboard and masonry walls
- Single leaf configurations only.
- Door and panel are 48mm nom. thick.
- Pressed metal door frames only.
- Ply facs.
- Panel is screw fixed, with optional collet and cap fixings.
- Maximum overall size, including door leaf and panel:
  - 3600 high x 1200 wide (maximum door leaf size is 2400mm high)
- (refer to Pyropanel FD-01 **Timber fire door leaves tech sheet** for more details and features on fire door leaves)

### OPTIONAL EXTRAS

- Vision panels up to 300mm x 200mm or 600mm x 100mm for fire door using fire rated glass
- Kick panels of stainless steel to selected height.
- Approved smoke seals, door viewers, electric strikes and locks, panic bars, magnetic hold open devices, etc.

### MODELS AVAILABLE

Model	Description	Max FRL	Thickness (Nom.)	Max overall size (leaf and panel)
FDPO-NT	Panel over with no transom	-/60/30	48	3600 x 1200



### HOW TO SPECIFY

"Door to be a (eg) Pyropanel PFD060-48\* Fire Rated Door, 48mm thick, -/60/30 FRL, Ply face\*, mounted in Pyropanel PMDF / Pyropanel Fire rated steel door frame with a Pyropanel **FDPO-NT (FIRE DOOR PANEL OVER WITH NO TRANSOM)**, and the following options: (eg, vision panels, kick panels, etc\*),

\* denotes example - delete, change or specify as required

**ASSA ABLOY Australia Pty Ltd**  
 235 Huntingdale Rd, Oakleigh, Vic 3166  
 Ph: **(03) 9837 8500**  
 Email: [sales@pyropanel.com.au](mailto:sales@pyropanel.com.au)  
 Web: [www.pyropanel.com.au](http://www.pyropanel.com.au)

**Distributed by:**