

# Pyropanel Double-Acting Fire Doorsets

## DESCRIPTION

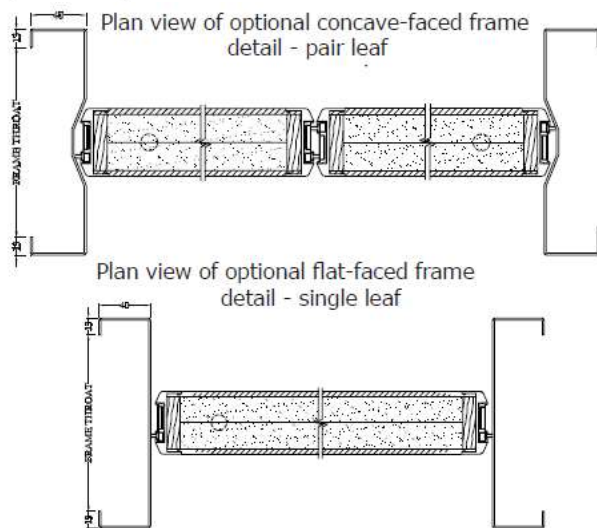
Timber Fire door leaves utilising the latest Pyropanel fire resistant door core and design technology. These doorsets are approved to AS1530.4:2014, and have the benefit of a double-action swinging mechanism.

## APPLICATIONS

Ideal for heavy traffic areas where two-way swing is an important function, and where fire resistance of up to 2 hours is required. Typical installations include hospitals, public buildings, corridors, nursing homes, schools, etc.

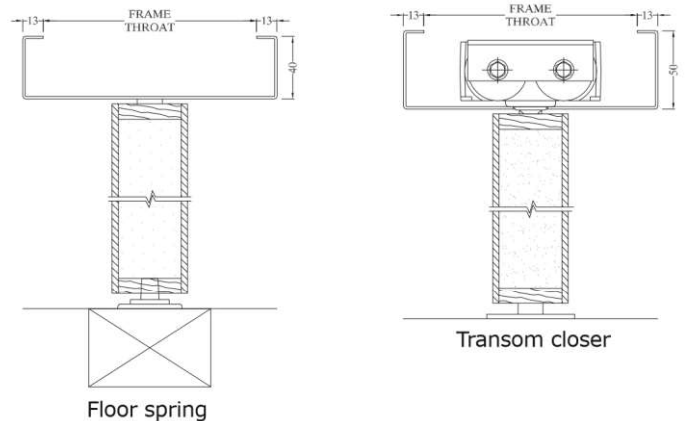
## FEATURES

- For use in 1hr and 2hr plasterboard stud walls, fire rated masonry walls, and Concrete walls. Refer to your Pyropanel distributors if your wall type is not listed.
- Available in singles or pairs.
- Special vertical edges incorporating extruded aluminium section with integrated intumescent smoke seals.
- Suitable for Pyropanel packed steel door frames designed specifically for double acting doors, available in flat faced or concave (please specify desired finish). Note: Concave only suitable for hinge side of frame.
- Facings - Plywood, MDF or Hardboard.
- Can be fitted with approved floor springs or transom (overhead) closers.



## OPTIONAL EXTRAS

- Veneer or laminate facings.
- Stainless Steel kick-plates to selected height.



Typical head and floor section detail

## MODELS AVAILABLE

Model	FRL	Thickness	Max Leaf size - Single	Max Leaf size - Pair
PDAFD060-48	-/60/60#	48	2650 x 1075 or 2400 x 1200	2650 x 1075/1075 or 2400 x 1200/1200
PDAFD120-48	-/120/60#	48	2650 x 1075 or 2400 x 1200	2650 x 1075/1075 or 2400 x 1200/1200

# Maximum Insulation rating shown (60 minutes) with frame packed with approved mortar (i.e. Pyropanel M4 lightweight mortar). 30 minute Insulation rating for other approved packing.

## HOW TO SPECIFY

Eg, "Door to be a Pyropanel PDAFD060\*-48 Double-Acting Fire Rated Doorset, 48mm nom. thick, -/60/30\* FRL, Ply faced\*, mounted in back-filled Pyropanel steel door frame with flat\* / concave\* finish, with the following options: (e.g. kick panels, etc\*).

\* denotes example - delete, change or specify as required